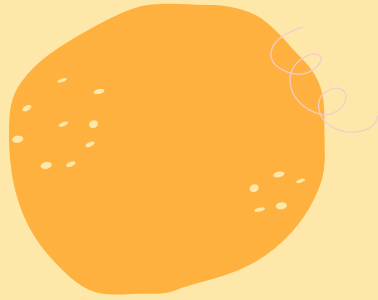


The background is a solid light yellow color. In the top-left corner, there is a dark purple shape with wavy lines and an orange shape with thin, overlapping lines. In the top-right, there is a red leaf with white spots and a small brown dot, and a thin orange spiral. In the bottom-left, there is a pink flower with a thin stem and dark purple leaves. In the bottom-right, there is a large teal circle with small yellow dots inside.

# Class 3

Art Reenactments



# The Getty Museum Challenge

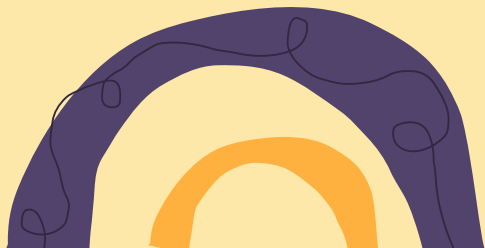
Otherwise known as  
“Between Art and Quarantine”



# The Rules

To be followed loosely

1. Choose a famous or historical piece of artwork

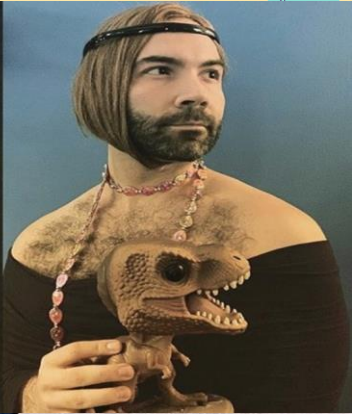


2. Use three items (or more) from around your household

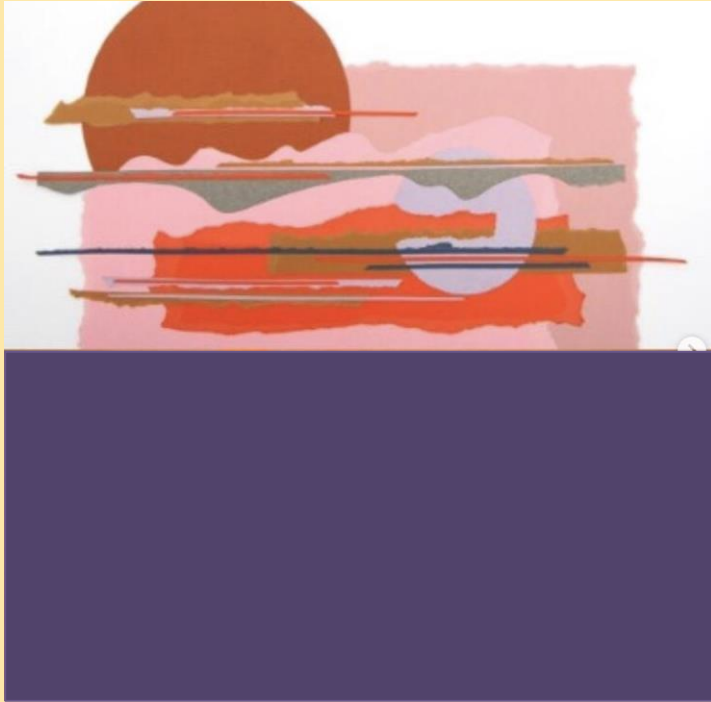
3. Stage and recreate your image!



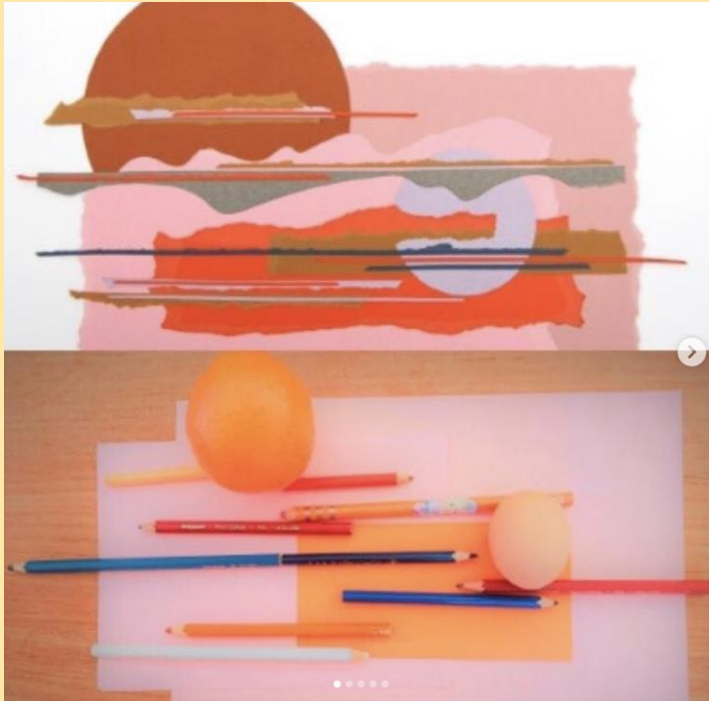




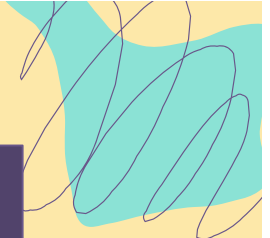
How did they do it?



# How did they do it?



How did they do it?





How did they do it?



How did they do it?



How did they do it?





# Tips from the museum

## Enlist a pet

Get your dogs, cats, bunnies, and even ferrets into the mix

## Think abstractly.

If you're having trouble re-creating an artwork's appearance, try focusing on shapes over colors.

## Pay attention to lighting.

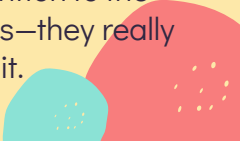
Try to imagine where the light in the artwork is coming from, and orient your composition so a window or lamp is casting similar light onto the scene. In bright daylight, windows offer a blue-tinged light, while most lamps cast a warmer glow.

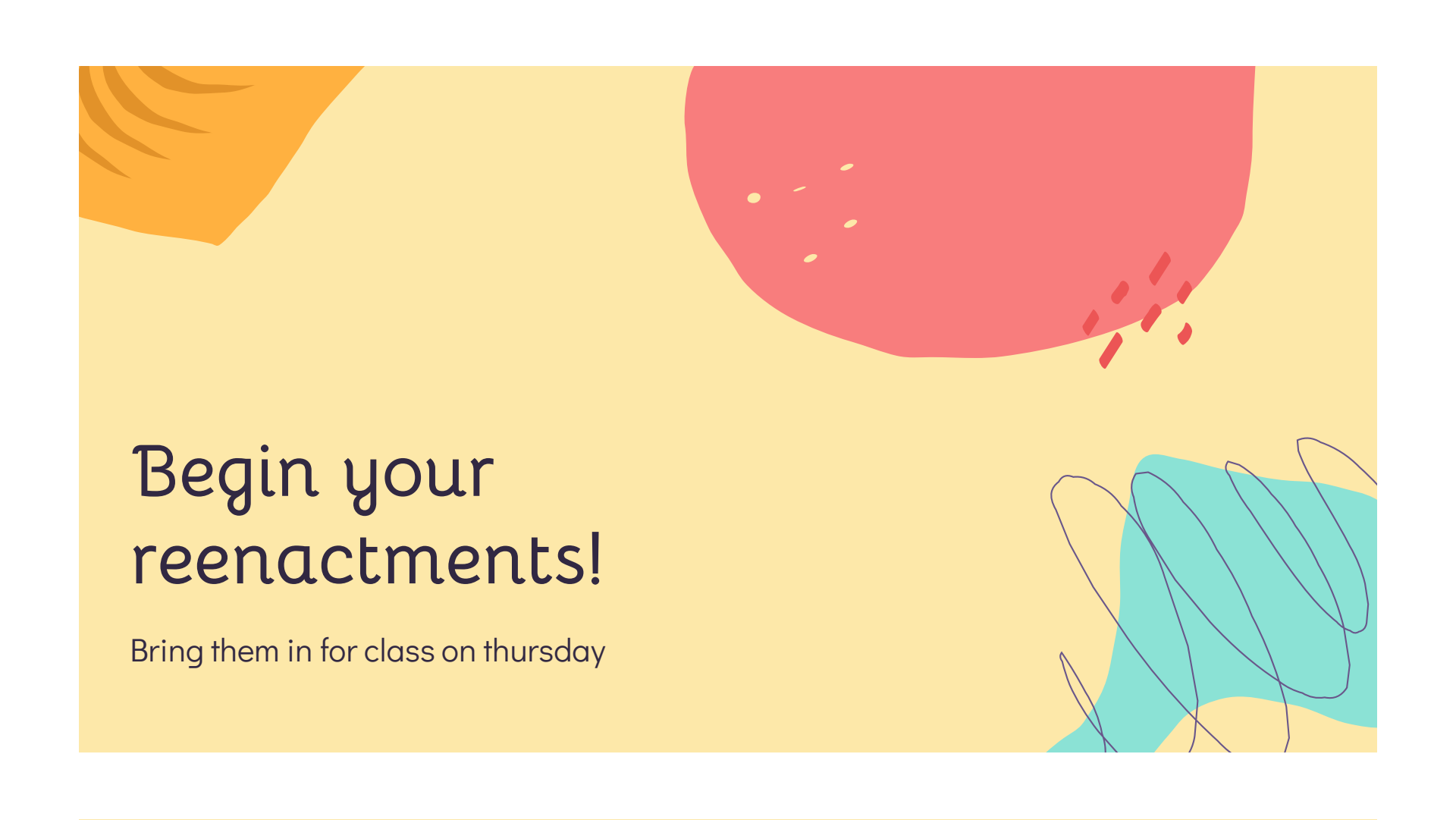
## Make it snackable.

Edible art counts too.

## Make a face, strike a pose.

If you're interested in re-creating a portrait or group scene, pay attention to the facial expressions—they really make it.



The background is a solid light yellow color. In the top left corner, there is an orange shape with curved lines, resembling a sun or a leaf. In the top right, there is a large red shape with several small white dots and a cluster of red dashed lines at its bottom edge. In the bottom right, there is a teal shape with several overlapping black outlines, resembling a stylized plant or abstract form.

# Begin your reenactments!

Bring them in for class on thursday


# A few questions

## Class on thursday

What are your current photographic interests? What's something we could talk about that we haven't yet?

## A showcase

Do you want to have a final showcase/critique of your work on the 29th with the challenge to create a photo from each of the prompts, or no?



See you on  
Thursday!

